

Ground floor



# Paris VIII Curie

8.1 / 8.2 / 8.4 / 8.6 / 8.8

PLOT	190,25/193,3 m <sup>2</sup>
Ground floor	78,65/79,85 m <sup>2</sup>
First floor	47,95/48,70 m <sup>2</sup>
Terrace (50%)	12,70 m <sup>2</sup>
Uncovered terrace	4,40 m <sup>2</sup>
<b>TOTAL BUILT</b>	<b>143,7/145,65 m<sup>2</sup></b>

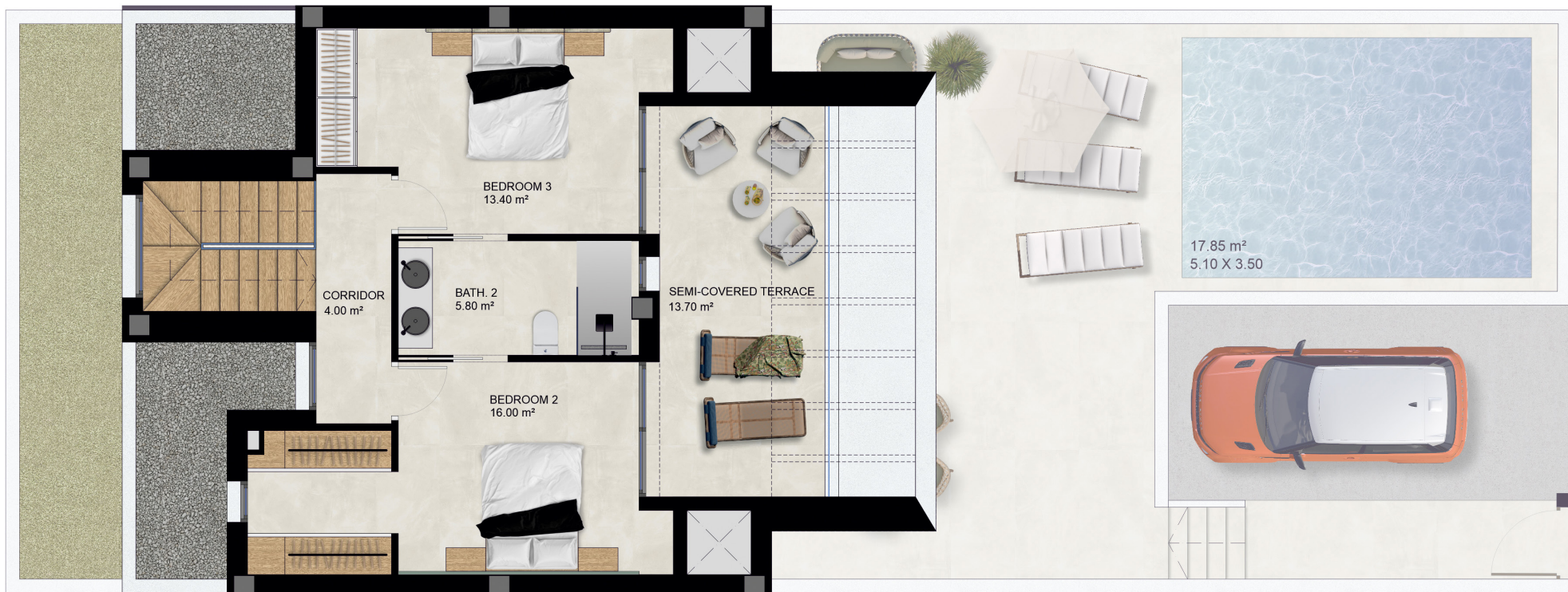
Ground floor



# Paris VIII Curie

8.3/8.5/8.7

PLOT	190,25 m <sup>2</sup>
Ground floor	78,65 m <sup>2</sup>
First floor	47,95 m <sup>2</sup>
Terrace (50%)	12,70 m <sup>2</sup>
Uncovered terrace	4,40 m <sup>2</sup>
<b>TOTAL BUILT</b>	<b>143,7 m<sup>2</sup></b>



# Paris VIII Curie

8.11 / 8.13 / 8.17 / 8.19

PLOT	190,5/190,7 m <sup>2</sup>
Ground floor	78,65 m <sup>2</sup>
First floor	47,95 m <sup>2</sup>
Terrace (50%)	12,70 m <sup>2</sup>
Uncovered terrace	4,40 m <sup>2</sup>
<b>TOTAL BUILT</b>	<b>143,7 m<sup>2</sup></b>